



UNIVERSITY OF  
SOUTH ALABAMA



MOULTON

WELCOME TO THE UNIVERSITY OF SOUTH ALABAMA



**SOUTH IS A SPECIAL PLACE**

See what it's like to be part of the Jaguar family.



STUDENT CENTER



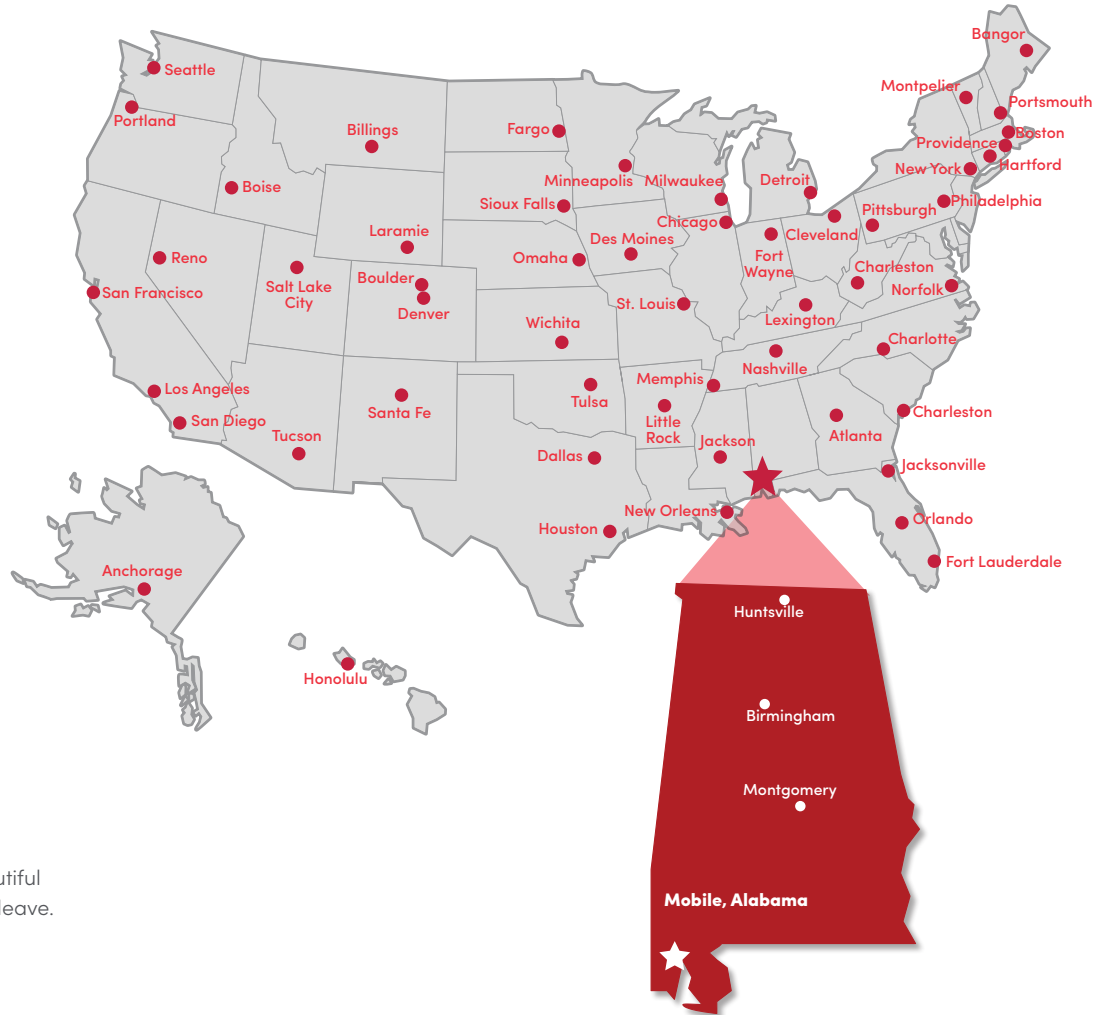
350





## SOUTH STUDENTS

come from all 50 states and over 50 countries! We have a campus environment that fosters diverse experiences and meaningful relationships, which is why so many students have chosen to call South "home." You can get here from anywhere, and we encourage you to come see our vibrant community for yourself!



APPROXIMATE  
TOTAL ENROLLMENT

**13,463**

AVERAGE ACT OF  
ENTERING FRESHMEN

**23.1**

AVERAGE GPA OF  
ENTERING FRESHMEN

**3.75**

AVERAGE  
CLASS SIZE

**19**

NCAA DIVISION 1  
SPORTS TEAMS

**17**

MAIN CAMPUS  
ACREAGE

**1,225**

STUDENT TO  
FACULTY RATIO

**17:1**

ANNUAL ECONOMIC  
IMPACT

**\$3 Billion**

Seeing is believing. Come tour our beautiful campus, and you'll likely never want to leave.

**Go to [SouthAlabama.edu/visit](http://SouthAlabama.edu/visit) or call (251) 341-3951 to schedule a tour.**

## THESE ARE GENERAL ADMISSIONS STANDARDS

The University of South Alabama will occasionally admit students who do not meet these exact criteria. Students should apply for admission if their grades and scores are close to the standards.

Students under admissions requirements can provide additional information to be reviewed by an admissions committee. This is another great path for students with good grades. Test-optional students may be asked to provide additional materials, and test-optional admissions are based on performance, course selection, and other key academic factors.



## GENERAL ADMISSIONS STANDARDS ACT 19 / SAT 990 / GPA 2.5

## APPLICATION PROCESS

### 1. APPLY ONLINE

[SouthAlabama.edu/apply](https://SouthAlabama.edu/apply)

### 2. SUBMIT TEST SCORES AND TRANSCRIPTS

Request an official transcript be sent to USA Office of Admissions. Request that your ACT or SAT scores be sent to USA.

### 3. NOTIFICATION OF ACCEPTANCE

You will be notified by email, or you can check your status on the admissions portal.

### 4. LOG INTO PAWS AND JAGMAIL

Your acceptance letter will include your J number. Use this to sign in.

### 5. APPLY TO LIVE ON CAMPUS

[SouthAlabama.edu/MyUSAHousing](https://SouthAlabama.edu/MyUSAHousing)

### 6. PRE-ORIENTATION AND ORIENTATION

Prior to orientation, you should submit immunization records and complete an online alcohol-prevention program.

### 7. ACADEMIC ADVISING

Your academic advisor will assist you with course selection.

### 8. ATTEND YOUR ORIENTATION SESSION

# ACADEMIC PROGRAMS

## PAT CAPPS COVEY COLLEGE OF ALLIED HEALTH PROFESSIONS

Biomedical Sciences  
Emergency Medical Services  
EMT Certification  
Professional Health Sciences  
Radiologic Sciences  
Speech and Hearing Sciences

## COLLEGE OF ARTS AND SCIENCES

Advertising and Public Relations  
Anthropology  
Art  
Biology  
Chemistry  
Communication Studies  
Criminal Justice  
Digital Film and TV  
Dramatic Arts  
English  
Environmental and Sustainability  
Sciences  
Modern Languages and Literature  
Geography  
Geology  
Gerontology (Certificate)  
History  
International Studies  
Journalism  
Mathematics/Statistics  
Marine Sciences  
Meteorology-Professional Track  
Meteorology-Graduate School  
Track  
Meteorology-Broadcast Met  
Track  
Music  
Philosophy  
Physics  
Political Science  
Psychology  
Social Work  
Sociology  
Theatre Arts

## MITCHELL COLLEGE OF BUSINESS

Accounting  
Economics and Finance-  
Economics Concentration  
Economics and Finance-  
Finance Concentration  
Economics and Finance-  
Real Estate Concentration  
General Business  
International Business  
Management-  
Entrepreneurship Concentration  
Management-General  
Management Concentration  
Management-Human Resources  
Concentration  
Marketing-Marketing  
Management Concentration  
Marketing-Professional Sales  
Concentration  
Supply Chain Management

## SCHOOL OF COMPUTING

Computer Science  
Health Informatics  
Information Systems  
Information Technology  
Process Technology Certification

## COLLEGE OF EDUCATION AND PROFESSIONAL STUDIES

Diversity and Cultural Competence  
Certification  
Early Childhood Studies  
Elementary Education K-6  
Exercise Physiology and Kinesiology  
Exercise Science - health and  
fitness concentration  
Exercise Physiology and Kinesiology  
Exercise Science -  
pre-professional concentration  
Exercise Physiology and Kinesiology  
Health Education 6-12 Teaching  
Certification  
Exercise Physiology and Kinesiology  
Health Promotion

Exercise Physiology and Kinesiology  
Physical Education P-12 and  
Health Education Teaching  
Certification  
Health - Health Education 6-12  
Teacher Certification  
Health - Health Promotion  
Health - Physical Ed-Physical  
Education P-12 and Health  
Education 6-12 Teacher  
Certification  
Hospitality and Tourism  
Management  
Interdisciplinary Studies  
Organizational Leadership  
Recreational Therapy  
Secondary Education Biology  
Secondary Education English  
Language Arts  
Secondary Education General  
Sciences  
Secondary Education  
Mathematics  
Secondary Education Social  
Science  
Special Education  
Sport Management and  
Recreation Studies-Coaching  
Administration  
Sports Management and  
Recreation Studies-Sport  
Administration  
TEFL/TESL Certification

## COLLEGE OF ENGINEERING

Chemical Engineering  
Civil Engineering  
Computer Engineering  
Electrical Engineering  
Mechanical Engineering

## COLLEGE OF NURSING

Nursing



# HONORS COLLEGE

The Honors College provides students with engaging opportunities to stimulate thinking and intellectual curiosity and to give back to our communities. Honors students and faculty work together throughout the University's colleges, establishing a center of innovation and collaboration. The Honors College is a magnet for differently talented and motivated campus leaders, and constitutes a distinct and valuable asset to the University's culture and community.

[SouthAlabama.edu/Honors](http://SouthAlabama.edu/Honors)



## IN THE PAST FIVE YEARS, USA HONORS COLLEGE STUDENTS HAVE WON:

- Upwards of 100 nationally competitive academic awards, scholarships and fellowships.
- Seven Goldwater awards (the most prestigious award for STEM undergraduates in the country).
- Multiple awards from the National Science Foundation, National Institutes of Health, Tau Beta Pi Engineering Honor Society, American Meteorological Society and more.





## ACADEMIC PROGRAMS

Biomedical Sciences  
Emergency Medical Services  
EMT Certification  
Professional Health Sciences  
Radiologic Sciences  
Speech and Hearing Sciences



**ESHAUN WRAY**

Class of 2021

B.S. Speech & Hearing Science  
with a minor in Psychology

**Scan for more.**



# PAT CAPPS COVEY COLLEGE OF ALLIED HEALTH PROFESSIONS

The Pat Capps Covey College of Allied Health Professions is dedicated to providing the highest quality in basic medical sciences and health professional education to meet healthcare needs and to contribute to new knowledge through research. The College has seven departments: Biomedical Sciences, Emergency Medical Services, Occupational Therapy, Physical Therapy, Physician Assistant Studies, Radiologic Sciences, and Speech Pathology and Audiology. [SouthAlabama.edu/alliedhealth](https://SouthAlabama.edu/alliedhealth)



# COLLEGE OF ARTS & SCIENCES

Arts and Sciences majors at USA learn to combine their disciplinary knowledge with invention, teamwork and creativity in order to find new answers and solutions. Whether in physics or philosophy, anthropology or visual arts, all fields in Arts and Sciences involve the study of those aspects of our world that address complex, open-ended problems and challenges. As a result, earning an Arts and Sciences degree provides for a rich development of the whole person.

[SouthAlabama.edu/artsandsci](https://SouthAlabama.edu/artsandsci)



## ACADEMIC PROGRAMS

Advertising and Public Relations  
Anthropology  
Art  
Biology  
Chemistry  
Communication Studies  
Criminal Justice  
Digital Film and TV  
Dramatic Arts  
English  
Environmental and Sustainability  
Sciences  
Modern Languages and Literature  
Geography  
Geology  
Gerontology (Certificate)  
History  
International Studies  
Journalism  
Mathematics/Statistics  
Marine Sciences  
Meteorology-Professional Track  
Meteorology-Graduate School  
Track  
Meteorology-Broadcast Met  
Track  
Music  
Philosophy  
Physics  
Political Science  
Psychology  
Social Work  
Sociology  
Theatre Arts



**KALEB NAILOR**  
Class of 2019  
B.A. History  
Scan for more.



**CARMEN HERNANDEZ**  
Class of 2022  
B.S. Meteorology  
Scan for more.





# MITCHELL COLLEGE OF BUSINESS

The Mitchell College of Business offers undergraduate majors in accounting, economics and finance, general business, international business, management, marketing, and supply chain and logistics management. The College also offers a Master of Business Administration, a Master of Accounting and a Doctor of Business Administration with concentrations in business analytics, management and marketing. It holds AACSB accreditations in both business and accounting. The Mitchell College of Business emphasizes experiential learning opportunities throughout the curriculum through internships, course assignments and center-driven projects. The College prides itself in ensuring that its students are more than just a number.

[SouthAlabama.edu/mcob](http://SouthAlabama.edu/mcob)



## ACADEMIC PROGRAMS

- Accounting
- Economics and Finance-  
Economics Concentration
- Economics and Finance-  
Finance Concentration
- Economics and Finance-  
Real Estate Concentration
- General Business
- International Business
- Management-  
Entrepreneurship Concentration
- Management-General  
Management Concentration
- Management-Human Resources  
Concentration
- Marketing-Marketing  
Management Concentration
- Marketing-Professional Sales  
Concentration
- Supply Chain Management



**MADDIE MITCHELL**  
 Class of 2021  
 B.S.B.A in Management with a  
 concentration in Human Resources  
**Scan for more.**



## ACADEMIC PROGRAMS

Computer Science  
Health Informatics  
Information Systems  
Information Technology  
Process Technology Certification



DEMARCUS  
WILLIAMS

Class of 2018  
B.S. Computer Science

[Scan for more.](#)



## SCHOOL OF COMPUTING

Establishing a skilled computing workforce is essential to the long-term economic stability of the region and can provide South Alabama students long-term, recession-resilient employment opportunities. Whether you are interested in creating computer games, defending cyberspace, building computer networks or finding computing solutions to business challenges, South's School of Computing offers education and support to help you start your career. Our graduates are equipped with a broad spectrum of technological and analytical skills. Students have been placed in high-tech companies such as Microsoft, Northrop Grumman and Cisco. The School of Computing also offers a scholarship program that leads directly to cyber defender jobs in the federal service sector.

[SouthAlabama.edu/SOC](https://SouthAlabama.edu/SOC)



# COLLEGE OF EDUCATION AND PROFESSIONAL STUDIES

The College of Education and Professional Studies offers a quality-driven education equipping students for their careers and beyond, actively supporting them every step of the way through a residential campus experience or online. Graduates are highly qualified professionals who serve as teachers, administrators, instructional designers, counselors and other professionals in educational settings, industry and human service agencies. The College also offers degrees for those seeking a career in a variety of disciplines and for a range of professional roles including health, fitness and wellness, mental health counseling, hospitality and tourism, sport management, and recreation. [SouthAlabama.edu/CEPS](https://SouthAlabama.edu/CEPS)



**MIA PENNISON,**  
Class of 2022  
B.A. Special Education  
[Scan for more.](#)



## ACADEMIC PROGRAMS

- Diversity and Cultural Competence Certification
- Early Childhood Studies
- Elementary Education K-6
- Exercise Physiology and Kinesiology
- Exercise Science – health and fitness concentration
- Exercise Physiology and Kinesiology Exercise Science – pre-professional concentration
- Exercise Physiology and Kinesiology Health Education 6-12 Teaching Certification
- Exercise Physiology and Kinesiology Health Promotion
- Exercise Physiology and Kinesiology Physical Education P-12 and Health Education Teaching Certification
- Health – Health Education 6-12 Teacher Certification
- Health – Health Promotion
- Health – Physical Ed-Physical Education P-12 and Health Education 6-12 Teacher Certification
- Hospitality and Tourism Management
- Interdisciplinary Studies
- Organizational Leadership
- Recreational Therapy
- Secondary Education Biology
- Secondary Education English Language Arts
- Secondary Education General Sciences
- Secondary Education Mathematics
- Secondary Education Social Science
- Special Education
- Sport Management and Recreation Studies-Coaching Administration
- Sports Management and Recreation Studies-Sport Administration
- TEFL/TESL Certification

## ACADEMIC PROGRAMS

- Chemical Engineering
- Civil Engineering
- Computer Engineering
- Electrical Engineering
- Mechanical Engineering



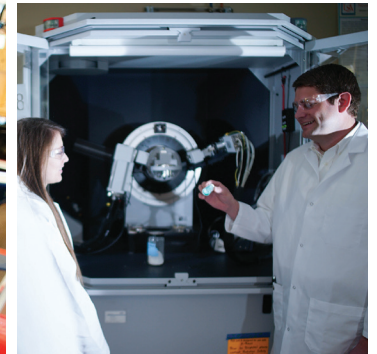
CHRIS WILLHITE  
Class of 2022  
B.S. Civil, Coastal and  
Environmental Engineering  
Scan for more.

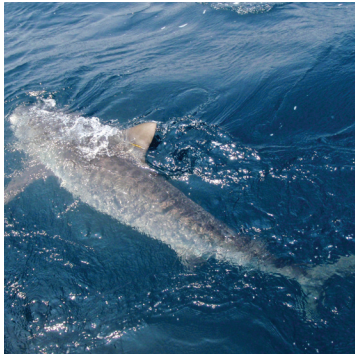
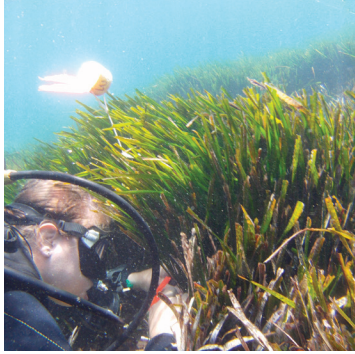


## COLLEGE OF ENGINEERING

The College of Engineering at the University of South Alabama is recognized for the quality of our graduates. Our students have done well in industrial and government careers, not only in the local Gulf Coast region, but also nationally and internationally. The College offers five baccalaureate degrees, five master's degrees and a doctoral degree in systems engineering. The foundation of the College of Engineering is its excellent faculty, with their dedication to teaching and researching new knowledge.

[SouthAlabama.edu/engineering](https://SouthAlabama.edu/engineering)





## SCHOOL OF MARINE & ENVIRONMENTAL SCIENCES

The University of South Alabama has a history of investment in marine sciences education and research, supporting a faculty of renowned experts in a range of marine-related disciplines. The USA School of Marine & Environmental Sciences within the College of Arts and Sciences is designed to address pressing environmental concerns of the coastal regions. The School trains the next generation of marine and environmental scientists, conducts cutting-edge research, and extends the impact of this training and research through service activities. [SouthAlabama.edu/marinesciences](https://SouthAlabama.edu/marinesciences)



## ACADEMIC PROGRAMS

Marine Sciences  
Environmental and Sustainability Sciences



### LEAH TOWNSEND

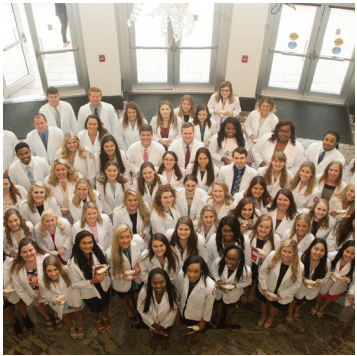
Class of 2023

B.S. Marine Sciences

**Scan for more.**







*The College of Nursing offers bachelor's, master's and doctoral degree programs as well as postgraduate certificates.*

# COLLEGE OF NURSING

The College of Nursing offers quality, innovative educational programs for students working toward earning a Bachelor of Science in Nursing (BSN). Using highly trained faculty and staff, state-of-the-art simulation and lab facilities, and local clinical experiences, our on-campus students train to license successfully in their profession, as well as further their education in our Master of Science in Nursing and Doctor of Nursing Practice programs. As early adopters of the use of technology in education, the faculty at the College of Nursing are also experts in delivering high-quality online nursing degree programs for the working nurse. [SouthAlabama.edu/CON](http://SouthAlabama.edu/CON)



## ACADEMIC PROGRAMS

Nursing



**FAITH EDGELL**

Class of 2022

B.S. Nursing

**Scan for more.**



# STUDY ABROAD

Study Abroad is the opportunity for South students to spend time in a different country while earning credit toward their degree through taking classes, interning, volunteering and more. Studying abroad can be one of the highlights of a student's university career, giving students a wonderful and challenging experience that will allow students to grow both academically and professionally. Get started today!

- \$100,000 awarded in study abroad scholarships every year
- Programs in over 60 countries
- Internships, volunteer programs and research opportunities available
- Trips can be as short as one week or as long as one year.
- Study abroad and finish in four years.

*The USA Visual Arts in Italy program provided students from all majors the opportunity to explore firsthand the art, architecture, archaeology, and culture of Italy.*



## ALLISON DOLLUS

South gave me an opportunity to study abroad. It allowed me to experience a new culture while earning credits for my degree! The Study Abroad office provided me with different countries I could study in. Students can apply for different types of programs lasting a few weeks, a semester or all year. South offers scholarship opportunities for students who would like to study abroad. These scholarships assist in covering the cost of tuition and living expenses. As a Spanish minor, I chose to study abroad in Spain for six weeks with a USA faculty member, and I received nine credits to complete my Spanish minor. Studying abroad gave me a new perspective on different cultures. I was able to increase the level of my Spanish skills by immersing myself in the language and being exposed to a different way of living. Without the help and guidance of the South faculty and Study Abroad program the memories and the sights I experienced would not have been possible.

# TRADITIONS AT SOUTH

- Junk the Jungle
- Oozeball
- NPHC Step Show
- Songfest
- Jaguar Block Party
- Prowl Homecoming Parade
- Glow in the Dark Dodgeball
- Fun Fest
- Haunted Nature Trail
- Homecoming Concert
- Headphone Glow Party



# RESOURCES



## [SOUTHALABAMA.EDU/ADMISSIONS](https://southalabama.edu/admissions)

- Admissions
- Campus tours
- Recruitment
- Enrollment
- Orientation
- Scholarship services
- Financial aid

## [SOUTHALABAMA.EDU/ACADEMICSUCCESS](https://southalabama.edu/academicsuccess)

- Center for Academic Excellence
- Transfer services
- Free tutoring
- Writing resources

## [SOUTHALABAMA.EDU/STUDENTSERVICES](https://southalabama.edu/student-services)

- Career Services
- Center for Educational Accessibility and Disabilities Resources
- International services
- Housing and dining
- Veteran Affairs

## CAMPUS LIFE

- JagTran – campus transportation
- Athletics
- Intramural sports
- Multicultural Student Affairs
- Office of Community Engagement
- Student Government Association
- Police and security
- Student organizations

## HEALTH AND WELLNESS

- Student Health Center
- Student health insurance
- Counseling and testing services
- USA Health
- Campus Recreation
- Outdoor Adventures
- Jag Fitness Trail (pictured)





### FIRST YEAR EXPERIENCE

College readiness/college integration courses are among the research-based practices recommended for improving retention and are considered a high impact educational practice by the AAC&U LEAP (Liberal Education and America's Promise) initiative. USA offered Freshmen Experience Courses in the College of Arts and Sciences, the College of Engineering, the Mitchell College of Business, the School of Computer and Information Sciences, and the College of Nursing. Course enrollment is typically restricted to 25 students.

**(251) 460-7103**  
[studentsuccess@southalabama.edu](mailto:studentsuccess@southalabama.edu)

### STUDENT ACADEMIC SUCCESS

Student Academic Success (SAS) supports the mission of the University by developing, implementing, and assessing initiatives and practices to ensure all students are offered the resources and relationships necessary for high quality learning, academic persistence, and degree completion.

**(251) 460-7103**  
[studentsuccess@southalabama.edu](mailto:studentsuccess@southalabama.edu)

### CENTER FOR ACADEMIC EXCELLENCE

The Center for Academic Excellence is South Alabama's tutoring and writing center. The CAE's mission is to provide tutoring and other learning resources to help all USA students succeed in their coursework and achieve their goals. This mission is grounded in the belief that students can learn anything with hard work, perseverance, and good study habits. Academic Advising Academic advising is the process where you obtain the critical information you need to make thoughtful decisions about your college career, such as deciding upon your major or solving any roadblocks you may encounter along the way. An academic advisor's purpose is to encourage students to develop as self-directed learners and decision makers. Good academic advising also supports the mission of the University of South Alabama through encouraging student academic success and persistence towards graduation.

**(251) 460-6480**  
[cae@southalabama.edu](mailto:cae@southalabama.edu)

### MARX LIBRARY

To support the present and anticipated teaching, research and service goals of the University of South Alabama, the mission of the University Libraries is to select, acquire, organize, promote and provide timely and efficient access to information resources, regardless of format or location. This includes instruction and critical evaluation of those resources.

**(251) 460-7028**  
[webref@southalabama.edu](mailto:webref@southalabama.edu)

### CENTER FOR EDUCATIONAL ACCESSIBILITY & DISABILITY RESOURCES (CEADR)

The University provides services to students with physical, psychological, or learning disabilities. Students in need of accommodations due to a disability should make contact with the Center for Educational Accessibility & Disability Resources by visiting us in the Educational Services Building or by calling or emailing.

**(251) 460-7212**  
[disabilityservices@southalabama.edu](mailto:disabilityservices@southalabama.edu)

### CAMPUS RECREATION & WELLNESS

The Student Recreation Center (SRC) is the Department of Campus Recreation and Wellness' state-of-the-art fitness center. Our 116,000 square-foot facility hosts events and activities for all programs within our department.

**(251) 460-6065**  
[src@southalabama.edu](mailto:src@southalabama.edu)

### CLUBS

As part of the Division of Student Affairs, USA Student Activities seeks to provide students with developmental opportunities beyond the scope of the classroom through involvement in activities, campus and community service, and student organizations. Our office is responsible for the registration and supervision of over 200 student clubs and organizations ranging from social to professional/departmental, religious organizations, honor societies and special interest groups. There is something for everyone!

**(251) 461-1627**  
[southsports@southalabama.edu](mailto:southsports@southalabama.edu)

# STOKES HALL

6299



# HOUSING

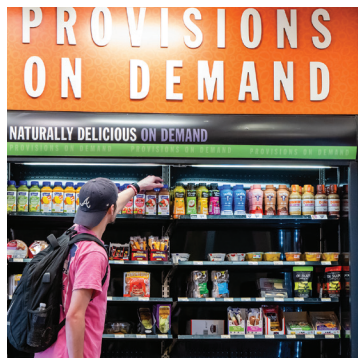
Stay close and stay connected! USA Housing offers 33 unique on-campus residence halls, all of which are:

- A short walk or tram ride to classes.
- Close to on-campus dining options.
- Near the Rec Center and fitness trail.
- Right next to Hancock Whitney Stadium.

Live on campus and you get everything in one affordable package: parking, wireless internet, cable TV, furniture, utilities, free unlimited laundry access and support staff who are available 24 hours a day.

South students who live on campus say it's the best way to get involved, make friends and stay on top of studies.

To see all the housing choices and benefits of living on campus, visit [SouthAlabama.edu/Housing](http://SouthAlabama.edu/Housing).



# DINING

USA Dining offers a wide variety of food and convenient services across campus. These services are designed with your needs in mind, providing flexibility and convenience to meet your demanding schedule. The meal plan options for residential students offer quality food at a discounted price. The Dining Hall is conveniently located within the residential area. Commuter meal plans are also available.

Other campus dining options include:

- Starbucks
- Einstein Bros. Bagels
- Greens to Go
- P.O.D. (Provisions On Demand)
- Chick-fil-A
- Delta Deli
- Moe's Southwest Grill
- Panda Express
- Prowler Bowls





## FINANCIAL AID

You can submit your Free Application for Federal Student Aid (FAFSA) at **FAFSA.gov** starting Dec. 1 of your senior year. Financial assistance can help you make a college education possible and South is eager to help you as you and your family make this most important investment. Financial aid is awarded annually for the academic year, which begins each August. The University uses FAFSA to evaluate students for federal and need-based aid.

### FINANCIAL AID

[SouthAlabama.edu/departments/finaid](https://southalabama.edu/departments/finaid)

### USA PAYMENT PLAN

[SouthAlabama.edu/studentaccounting](https://southalabama.edu/studentaccounting)

### VETERAN AFFAIRS

[SouthAlabama.edu/veterans](https://southalabama.edu/veterans)

(251) 460-6230

### ONE STOP @ SOUTH

[SouthAlabama.edu/onestop](https://southalabama.edu/onestop)

(251) 341-4USA (4872)

Be sure to check out our College Cost Estimator to help plan ahead:

[southalabama.edu/onestop/costestimator](https://southalabama.edu/onestop/costestimator)



## SCHOLARSHIPS

For a full listing of available scholarships, visit [SouthAlabama.edu/freshscholarships](https://SouthAlabama.edu/freshscholarships). Freshman ACT/GPA admissions scholarships are automatically awarded and test optional awards are reviewed weekly.

For additional scholarship consideration, visit JagSPOT, the University's scholarship portal. The University of South Alabama reserves the right the right to adjust scholarship levels after our priority deadlines have passed. Please be sure to check our website for further details and opportunities.

**SCHOLARSHIPS ARE AWARDED TO INCOMING FRESHMEN BASED ON THEIR TEST SCORES AND HIGH SCHOOL/COLLEGE GPA AS WELL AS TEST OPTIONAL BASED ON GPA AND COURSE RIGOR.**

### 2023-2024 FRESHMEN SCHOLARSHIPS 4-YEAR RENEWABLE AWARDS

ACT	SAT	GPA 3-3.49	GPA 3.5-3.74	GPA 3.75 AND UP
21-22	1060-1120	\$2,000	\$2,500	\$3,000
23-24	1130-1190	\$3,000	\$3,500	\$4,000
25-26	1200-1250	\$3,500	\$4,000	\$5,000
27-29	1260-1350	\$4,000	\$5,500	\$6,000
30-31	1360-1410	\$4,500	\$7,000	\$8,000
≥32	1420-1600	\$5,000	A&S Tuition*	A&S Tuition*

\* **Tuition value is up to 30 credit hours at the Arts & Sciences rate per year (fall/spring).**  
**Out-of-state students awarded one of these awards receive in-state tuition.**

### 2023-2024 TEST OPTIONAL 4-YEAR RENEWABLE AWARDS

USA also offers scholarships in the amounts of \$2,000 - \$9000 for students who chose to apply test optional to South. Those scholarships are awarded on the basis of GPA, course selection (honors, AP, etc.), and a variety of other holistic factors.

In addition, South offers need-based funding to admitted students who qualify through their FAFSA's. These awards are made after initial scholarship consideration, so it is possible to receive one award and then a few weeks later receive another.

Students should always check JagSPOT for additional scholarship opportunities and be sure to apply for them by **February 15**.

## IMPORTANT DATES

### BEGINNING AUGUST

Apply for admissions  
[explore.southalabama.edu/apply](https://explore.southalabama.edu/apply)

### OCTOBER 1

Apply for additional scholarships in JagSPOT by February 15.  
[SouthAlabama.edu/scholarships](https://SouthAlabama.edu/scholarships)

### AUGUST 1

Honors College application opens.





# COST

## 2023-2024 ANNUAL COST OF ATTENDANCE

	YEAR IN-STATE	YEAR OUT-OF-STATE
Tuition	\$11,220	\$22,440
Fee*	\$400	\$400
Room Rate	\$4,480-\$7,250	\$4,480-\$7,250
Meal Plan	\$4,350	\$4,350
Books & Supplies (est.)	\$2,020	\$2,020
Total Cost:	\$22,470 - \$25,240	\$33,690-\$36,460

\*An Academic Infrastructure & Technology Fee of \$200 for full-time students is added per semester.

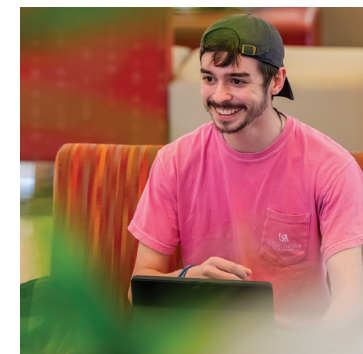
A monthly payment plan for tuition, housing and dining costs is available. Visit [SouthAlabama.edu/studentaccounting](https://SouthAlabama.edu/studentaccounting).



# STOP ONE @ SOUTH

At the University of South Alabama, there's a shortcut for students with questions about everything from financial aid to academic resources to campus activities. It's called One Stop. And it's making problem-solving more convenient so students can focus on school and make the most of their college experience.

[SouthAlabama.edu/OneStop](https://SouthAlabama.edu/OneStop)



**SEPTEMBER 1**  
On campus housing application opens

**SEPTEMBER 1**  
Early Acceptance Program (EAP) applications will open.



**DECEMBER**  
The Free Application for Federal Student Aid (FAFSA) opens.  
**FAFSA.gov**

**FEBRUARY**  
Registration opens for Southbound Orientation.  
**SouthAlabama.edu/departments/orientation**

**APRIL 1**  
On campus housing application opens + prepayment priority date

**MAY - AUGUST**  
Southbound Orientation sessions are held.

SOUTH IS AMAZING,  
BUT DON'T TAKE OUR  
WORD FOR IT. COME  
SEE FOR YOURSELF!



We are so glad that you are interested in connecting with us. We can't wait to show all of our prospective Jaguars what South Alabama is all about. Check out the options below for visiting with us! Students who attend an on-campus tour with a South Guide, virtual meeting with USA recruitment staff, or one of our special events are eligible to receive a \$100 visit credit.

#### CAMPUS TOURS

Tours are given Monday-Friday and select Saturdays. Go to [SouthAlabama.edu/visit](https://SouthAlabama.edu/visit) or call (251) 341-3951 to schedule a tour.

#### USA DAYS

Saturday open houses held in the fall and spring. For dates and additional information, visit [SouthAlabama.edu/usaday](https://SouthAlabama.edu/usaday).

#### VIRTUAL MEETINGS

We can't wait for you to be here, but in the meantime, we want to answer your questions and tell you all about South. During this meeting, you will have the opportunity to meet with one of our Admissions Officers and learn more about our great University. [SouthAlabama.edu/visit](https://SouthAlabama.edu/visit)

# WELCOME TO THE GULF COAST

The University of South Alabama is located minutes from the beautiful Gulf of Mexico in Mobile, Alabama. Mobile boasts a rich history and a prime location and is a vibrant cultural, recreational and economic hub along the Gulf Coast.



## ARTS AND ENTERTAINMENT

Mobile has a thriving arts community with festivals, art walks and live music year-round. The Hangout Music Festival, held over three days in May in Gulf Shores, attracts a lineup of more than 50 artists and thousands of music lovers.



## GULF COAST BEACHES

South Alabama's campus is a short drive away from the most beautiful beaches in the world.

- Dauphin Island, AL, 33.9 mi.*
- Gulf Shores, AL, 68.4 mi.*
- Gulfport, MS, 77.0 mi.*
- Destin, FL, 122.2 mi*



## MARDI GRAS

Mobile is the birthplace of Mardi Gras (1703), and the city celebrates big with multiple parades leading up to Fat Tuesday. Every year, the Jaguar Marching Band participates in at least one parade, with President Bonner throwing beads to thousands of people lining the streets.



## BELLINGRATH GARDENS AND HOME

The 65-acre property sits on Fowl River in south Mobile County and is listed on the National Register of Historic Places. The home and gardens are open to the public year-round, and the Magic Christmas in Lights has been named one of the top ten light displays in America by *USA Today*.



## THE FOOD

Being on the water has it's advantages, one of them being an abundance of fresh local seafood. From crawfish boils to shrimp po-boys, you'll find endless opportunities to satisfy your cravings.



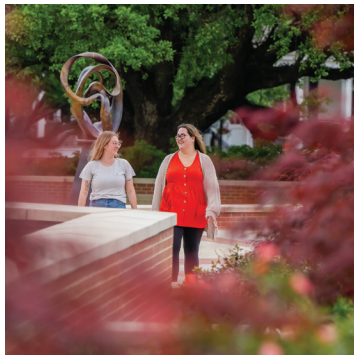
# CAMPUS MAP



- V** Visitor Parking
- ?** Information and Parking Permits/  
USA Police

## DESIGNATED PARKING LOTS

- |   |  |   |
|---|--|---|
| <b>L101</b> Intramural Fields             | <b>L308</b> Pi Kappa Phi Fraternity House        | <b>L607</b> MacQueen Center/<br>Humanities South        |
| <b>L102</b> Intramural Fields             | <b>L309</b> Sigma Chi Fraternity House           | <b>L701</b> Visual Arts                                 |
| <b>L103</b> Intramural Field House        | <b>L310</b> Pi Kappa Alpha Fraternity House      | <b>L801</b> Health Sciences                             |
| <b>L104</b> Transportation Services       | <b>L311</b> Athletics Administration             | <b>L802</b> College of Medicine                         |
| <b>L105</b> Hancock Whitney Stadium South | <b>L312</b> Football Field House                 | <b>L803</b> Life Sciences Building                      |
| <b>L201</b> Baptist Church                | <b>L401</b> Mitchell Center                      | <b>L804</b> Marx Library/Humanities North/<br>Chemistry |
| <b>L202</b> Faculty Club                  | <b>L501</b> Shelby/Student Services Dr. South    | <b>L901</b> Aubrey Green at Ernest Cleverdon            |
| <b>L203</b> Stadium Dr. Southwest         | <b>L502</b> Shelby/Student Services Dr. North    | <b>L902</b> Clinic Dr. North                            |
| <b>L204</b> Stadium Dr. Southeast 1       | <b>L503A</b> University Commons-Academics        | <b>L903</b> Clinic Dr. South                            |
| <b>L205</b> Stadium Dr. Southeast 2       | <b>L503B</b> University Commons-USA Health       | <b>L904</b> Educational & Outreach                      |
| <b>L206</b> Sorority Houses               | <b>L601</b> Laidlaw/Mitchell College of Business | <b>L905</b> TRP North                                   |
| <b>L301</b> Stanky Field                  | <b>L602</b> Administration/USA South Dr.         | <b>L906</b> Laboratory of Infectious Diseases           |
| <b>L302</b> Jaguar Blvd. South            | <b>L603</b> Mitchell College of Business         | <b>L907</b> TRP I                                       |
| <b>L303</b> Beta Gamma Lot                | <b>L604</b> Student Center East                  | <b>L908</b> TRP II                                      |
| <b>L304</b> Jaguar Blvd. North            | <b>L605</b> Bethel/Townhouse                     |   |
| <b>L305</b> Delta Loop                    | <b>L606</b> Student Center West                  |   |
| <b>L306</b> Greek Dr.-Stokes Hall         | <b>L607</b> Humanities                           |   |
| <b>L307</b> Hancock Whitney Stadium East  | <b>L608</b> Communication/Science Laboratory     |   |





## CAMPUS FACILITIES, ALPHABETICAL LISTING

- |  |  |   |  |
|--|--|---|--|
| 84 Academic Services Center                                    | 26 Delta Commons   | 2 Intramural Fieldhouse                                     | 52 Parking Services                          |
| 19 Alpha Gamma Delta Sorority House                            | 27 Delta Residence Hall 3                                      | 1 Intramural Sports Complex                                 | 17 Phi Mu Sorority House                     |
| 102 Alpha Hall East  | 28 Delta Residence Hall 4                                      | 66 Jag Fitness Trail  | 23 Pi Kappa Alpha Fraternity House           |
| 106 Alpha Hall South   | 29 Delta Residence Hall 5                                      | 62 Jaguar Track   | 21 Pi Kappa Phi Fraternity House             |
| 18 Alpha Omicron Pi Sorority House                             | 30 Delta Residence Hall 6                                      | 6 Jaguar Training Center                                    | 52 Police/Beta-Gamma Commons                 |
| 68 Archaeology Lab 1   | 15 Dining Facility (Fresh Food Company)                        | 5 James A. and Frances H. Yancey Football Practice Facility | 40 Property Inventory Warehouse              |
| 69 Archaeology Lab 2   | 96 Education & Outreach Building                               | 13 Epsilon Residence Hall 1                                 | 65 Science Laboratory Building               |
| 67 Archaeology Museum  | 13 Epsilon Residence Hall 1                                    | 14 Epsilon Residence Hall 2                                 | 79 Seamen's Bethel/Honors College            |
| 70 Archaeology Storage   | 9 Athletics Administration Building                            | 10 Faculty Club   | 117 Shelby Hall                              |
| 9 Athletics Administration Building                            | 63 Athletics Annex   | 59 Farish Beard Indoor Practice Facility (Softball)         | 22 Sigma Chi Fraternity House                |
| 63 Athletics Annex   | 32 Azalea Hall   | 7 Football Fieldhouse                                       | 58 Soccer Field (The Cage)                   |
| 32 Azalea Hall   | 33 Beta Apartment Residence Hall 1                             | 42 Gamma Residence Hall 0                                   | 57 Softball Field (Jaguar Field)             |
| 33 Beta Apartment Residence Hall 1                             | 34 Beta Apartment Residence Hall 2                             | 43 Gamma Residence Hall 1                                   | 56 Softball/Soccer Fieldhouse                |
| 34 Beta Apartment Residence Hall 2                             | 35 Beta Apartment Residence Hall 3                             | 44 Gamma Residence Hall 2                                   | 55 Stanky Field                              |
| 35 Beta Apartment Residence Hall 3                             | 36 Beta Apartment Residence Hall 4                             | 45 Gamma Residence Hall 3                                   | 25 Stokes Hall                               |
| 36 Beta Apartment Residence Hall 4                             | 37 Beta Apartment Residence Hall 5                             | 46 Gamma Residence Hall 4                                   | 92 Student Center                            |
| 37 Beta Apartment Residence Hall 5                             | 98 BMA Dialysis Center   | 47 Gamma Residence Hall 5                                   | 86 Student Health Center                     |
| 98 BMA Dialysis Center   | 91 Bookstore   | 48 Gamma Residence Hall 6                                   | 12 Student Recreation Center                 |
| 91 Bookstore   | 31 Camellia Hall   | 49 Gamma Residence Hall 7                                   | 99 Technology & Research Park                |
| 31 Camellia Hall   | 90 Center for Educational Accessibility & Disability Resources | 50 Gamma Residence Hall 8                                   | 97 Technology & Research Park, Building III  |
| 90 Center for Educational Accessibility & Disability Resources | 105 Central Services Admin Building                            | 51 Gamma Residence Hall 9                                   | 72 Telecommunications Building               |
| 105 Central Services Admin Building                            | 71 Central Utilities Plant                                     | 108 Glass Arts Building                                     | 91 Marx Library                              |
| 71 Central Utilities Plant                                     | 103 Charles M. Baugh Biomedical Library                        | 38 Grounds Department                                       | 111 Mathematical Sciences & Physics Building |
| 103 Charles M. Baugh Biomedical Library                        | 76 Chemistry Building  | 8 Hancock Whitney Stadium                                   | 104 Medical Sciences Building                |
| 76 Chemistry Building  | 16 Chi Omega Sorority House                                    | 85 Health, Kinesiology & Sport Building/Jag Gym             | 93 Meisler Hall                              |
| 16 Chi Omega Sorority House                                    | 64 Communication Building                                      | 100 Health Sciences Building                                | 82 Mitchell Center                           |
| 64 Communication Building                                      | 87 Computer Services Center                                    | 101 Health Simulation Building                              | 115 Mitchell College of Business             |
| 87 Computer Services Center                                    | 73 Construction Services & Facilities Warehouse                | 75 Humanities Building                                      | 116 Mitchell Learning Resource Center        |
| 73 Construction Services & Facilities Warehouse                | 88 Counseling & Testing  | 81 Moulton Tower & Alumni Plaza                             | 80 Mobile Townhouse                          |
| 88 Counseling & Testing  |  | 11 Outdoor Adventures                                       | 81 Moulton Tower & Alumni Plaza              |

## CAMPUS FACILITIES, NUMERICAL LISTING

- |   |   |  |  |
|---|---|--|--|
| 1 Intramural Sports Complex                                 | 32 Azalea Hall                                      | 62 Jaguar Track  | 91 Bookstore                                 |
| 2 Intramural Fieldhouse                                     | 33 Beta Apartment Residence Hall 1                  | 63 Athletics Annex   | 92 Student Center                            |
| 3 Warehouse   | 34 Beta Apartment Residence Hall 2                  | 64 Communication Building                                      | 93 Meisler Hall                              |
| 4 Transportation Services                                   | 35 Beta Apartment Residence Hall 3                  | 65 Science Laboratory Building                                 | 94 Marx Library                              |
| 5 James A. and Frances H. Yancey Football Practice Facility | 36 Beta Apartment Residence Hall 4                  | 66 Jag Fitness Trail   | 95 Laboratory of Infectious Diseases         |
| 6 Jaguar Training Center                                    | 37 Beta Apartment Residence Hall 5                  | 67 Archaeology Museum  | 96 Education & Outreach Building             |
| 7 Football Fieldhouse                                       | 38 Grounds Department                               | 68 Archaeology Lab 1   | 97 Technology & Research Park, Building III  |
| 8 Hancock Whitney Stadium                                   | 39 Treatment Storage & Disposal                     | 69 Archaeology Lab 2   | 98 BMA Dialysis Center                       |
| 9 Athletics Administration Building                         | 40 Property Inventory Warehouse                     | 70 Archaeology Storage   | 99 Technology & Research Park                |
| 41 Kappa Sigma Chapter Room                                 | 41 Kappa Sigma Chapter Room                         | 71 Central Utilities Plant                                     | 100 Health Sciences Building                 |
| 42 Gamma Residence Hall 0                                   | 42 Gamma Residence Hall 0                           | 72 Telecommunications Building                                 | 101 Health Simulation Building               |
| 43 Gamma Residence Hall 1                                   | 43 Gamma Residence Hall 1                           | 73 Construction Services & Facilities Warehouse                | 102 Alpha Hall East                          |
| 44 Gamma Residence Hall 2                                   | 44 Gamma Residence Hall 2                           | 74 Maintenance Garage  | 103 Charles M. Baugh Biomedical Library      |
| 45 Gamma Residence Hall 3                                   | 45 Gamma Residence Hall 3                           | 75 Humanities Building   | 104 Medical Sciences Building                |
| 46 Gamma Residence Hall 4                                   | 46 Gamma Residence Hall 4                           | 76 Chemistry Building  | 105 Central Services Admin Building          |
| 47 Gamma Residence Hall 5                                   | 47 Gamma Residence Hall 5                           | 77 MacQueen Alumni Center                                      | 106 Alpha Hall South                         |
| 48 Gamma Residence Hall 6                                   | 48 Gamma Residence Hall 6                           | 78 Toulmin House (formerly Alumni Hall)                        | 107 Visual Arts Complex                      |
| 49 Gamma Residence Hall 7                                   | 49 Gamma Residence Hall 7                           | 79 Seamen's Bethel/Honors College                              | 108 Glass Arts Building                      |
| 50 Gamma Residence Hall 8                                   | 50 Gamma Residence Hall 8                           | 80 Mobile Townhouse  | 109 Life Sciences Lecture Hall               |
| 51 Gamma Residence Hall 9                                   | 51 Gamma Residence Hall 9                           | 81 Moulton Tower & Alumni Plaza                                | 110 Life Sciences Building                   |
| 52 Parking Services/Police/Beta-Gamma Commons               | 52 Parking Services/Police/Beta-Gamma Commons       | 82 Mitchell Center   | 111 Mathematical Sciences & Physics Building |
| 53 Luis Gonzalez Hitting Facility                           | 53 Luis Gonzalez Hitting Facility                   | 83 Lubel Memorial Tennis Courts                                | 112 Whiddon Administration Building          |
| 54 Jon Lieber Clubhouse                                     | 54 Jon Lieber Clubhouse                             | 84 Academic Services Center                                    | 113 Tholos of Delphi Replica                 |
| 55 Stanky Field   | 55 Stanky Field                                     | 85 Health, Kinesiology & Sport Building/Jag Gym                | 114 Laidlaw Performing Arts Center           |
| 56 Softball/Soccer Fieldhouse                               | 56 Softball/Soccer Fieldhouse                       | 86 Student Health Center                                       | 115 Mitchell College of Business             |
| 57 Softball Field (Jaguar Field)                            | 57 Softball Field (Jaguar Field)                    | 87 Computer Services Center                                    | 116 Mitchell Learning Resource Center        |
| 58 Soccer Field (The Cage)                                  | 58 Soccer Field (The Cage)                          | 88 Counseling & Testing  | 117 Shelby Hall                              |
| 59 Farish Beard Indoor Practice Facility (Softball)         | 59 Farish Beard Indoor Practice Facility (Softball) | 89 Innovation in Learning Center                               | 118 University Commons                       |
| 60 Marching Band Practice Field                             | 60 Marching Band Practice Field                     | 90 Center for Educational Accessibility & Disability Resources |  |
| 61 Marching Band Practice Field Pavilion                    | 61 Marching Band Practice Field Pavilion            |  |  |





# ATHLETICS

The University of South Alabama fields eight men's and nine women's athletic programs, competing at the **NCAA Division I** level. South Alabama is a charter member of the **Sun Belt Conference** with a multisport history of excellence in competition and in the classroom.



**SOUTH HAS 17  
NCAA DIVISION 1 TEAMS**

## Men

- **Baseball**
- **Football**
- **Basketball**
- **Tennis**
- **Golf**
- **Track & Field**
- **Cross Country**

## Women

- **Soccer**
- **Softball**
- **Basketball**
- **Tennis**
- **Golf**
- **Track & Field**
- **Cross Country**
- **Volleyball**



## OFFICE OF NEW STUDENT RECRUITMENT

(251) 460-7834 | (800) USA-JAGS  
[recruitment@southalabama.edu](mailto:recruitment@southalabama.edu)

## FOLLOW US

-  [@uofsouthalabama](https://www.instagram.com/uofsouthalabama)
-  [@theuniversityofsouthalabama](https://www.facebook.com/theuniversityofsouthalabama)
-  [@UofSouthAlabama](https://twitter.com/UofSouthAlabama)
-  [@University of South Alabama](https://www.linkedin.com/company/University-of-South-Alabama)

USA does not discriminate on the basis of race, sex (including pregnancy), sexual orientation, religion, color, national origin, age, genetic information, disability or veteran status. For more information, contact the VP for Student Affairs at (251) 460-6172.



**UNIVERSITY OF SOUTH ALABAMA**  
OFFICE OF NEW STUDENT RECRUITMENT  
Meisler Hall Suite 2500  
390 Student Center Circle  
Mobile, Alabama 36688

Non-Profit  
U.S. POSTAGE  
PAID  
Mobile, AL  
Permit No. 506

